

V1, 2023

Accessibility Statement for the Driffield Showground



David Tite

Driffield Agricultural Society
The Showground
Driffield Road
Kelleythorpe
Driffield
East Yorkshire
YO25 9FB

01377 257494

events@driffieldshowground.co.uk
www.driffieldshowground.co.uk

Index

	Page
Foreword	2
Driffield Showground Site Plan	3
Tarmac roads	4
Stoned roads	4
Grass swale	5
Rix Pavilion	5, 6, 7
Members Pavilion	8, 9, 10, 11, 12
Market Weighton Toilet Block	13, 14
Cedar Lodge Toilet Block	15, 16

Foreword

Driffield Agricultural Society is a charity that owns and runs the Driffield Showground, we want all to feel welcome to visit the site and enjoy the activities held here. This is designed to give you a 'go to' document for when you are visiting the showground so you can understand what facilities we have to offer.

We realise this is an on going journey in making the site as accessible as possible and we want you to trust what we are saying, we will highlight areas that may be challenging for some and we feel it important that you as our guest understand this.

Some events like the Driffield Show uses the full showground and up to 11 car park fields hired in from local farmers, other events like the Steam Rally use just the Showground whilst some activities on site only use certain areas and toilet blocks, so it is important to look at our event calendar and click on the relevant event for contact details for the specific event.

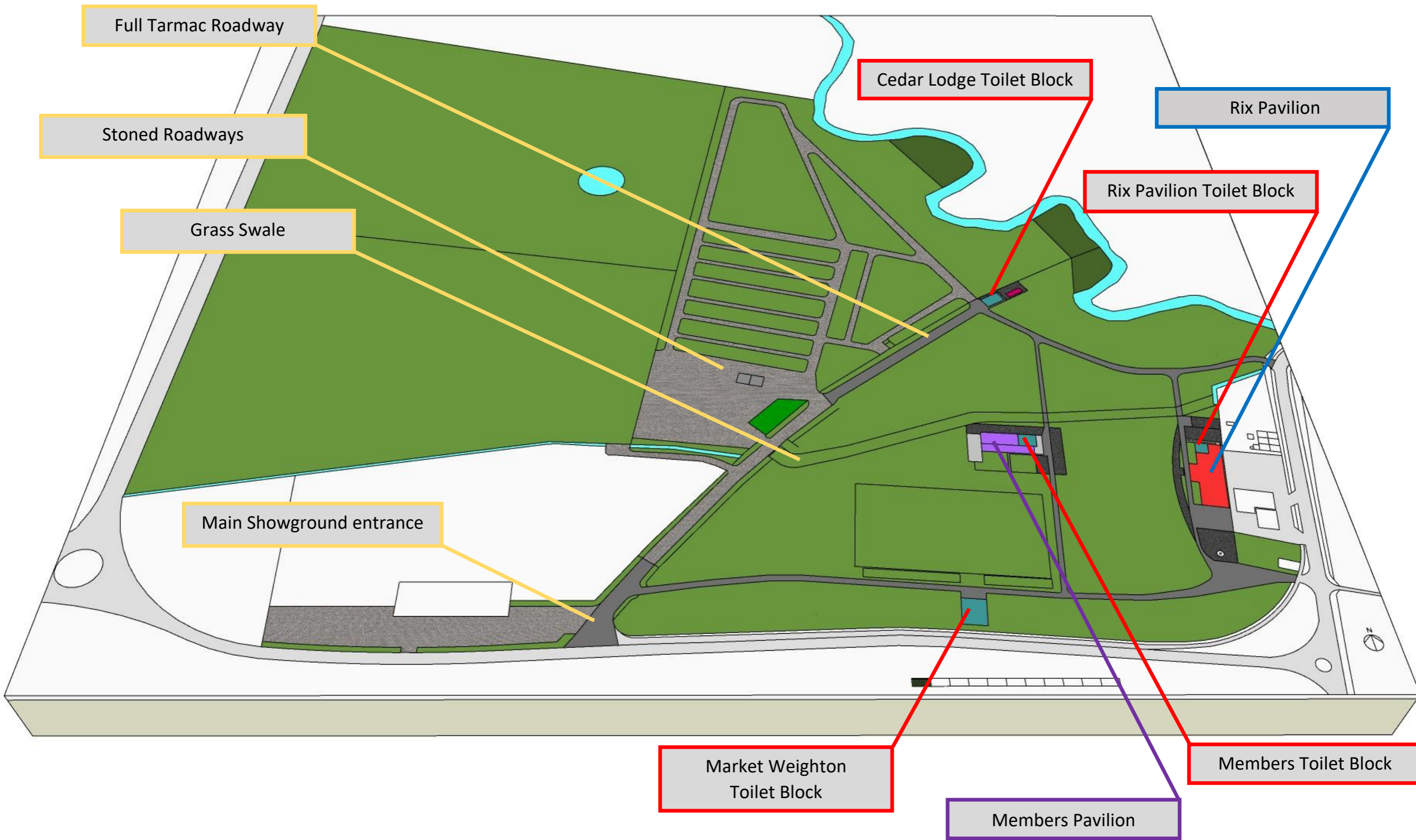
As an organisation we want to move forward and be as accessible to all as we can, we are proud of what we have achieved over the last 10 years but acknowledge there is always room for improvement and development. From now on the Driffield Agricultural Society will have 'Accessible Toilet Blocks' rather than 'Disabled Toilet Blocks', signage is being replaced to reflect this, but as a charity these actions take time as I'm sure you the reader will understand. We aspire to have a changing places room on site but again this takes time to raise the funding, so to reflect this one of our toilet block goes further than the standard DDA compliant accessible toilet block with a shower and changing bench in place, we realise that until we have a winch this has limited capability but we have an aim we are working towards and we hope to have further news on that in the next 12 months.

I hope this document shows we are clearly on a journey that will take time to come to fruition but please have faith that we take our responsibilities seriously and will always do what we can as soon as we can.

David Tite

Chief Executive Officer

Driffield Showground Facilities



Tarmac Roadways



As highlighted on the previous page we do have a lot of tarmac roadways on the site, these are maintained on a regular basis and kept in good condition, there may be an occasional pothole that is fixed as soon as possible.

Stoned Roadways



There are also a series of roadways that are constructed of compacted crushed concrete and road plainings, these are also highlighted on the previous plan. We try to ensure that these surfaces are compacted and as smooth as possible without potholes. Specifically at the Driffield Show we try to ensure there is 1m of grass on either side of the stoned tracks for wheel chairs and pushchairs to run on.

The grass on site is set on a chalk bedrock and the soil is only 4" / 100mm deep so the going is good except in only the worst of weather.

Grass Swale



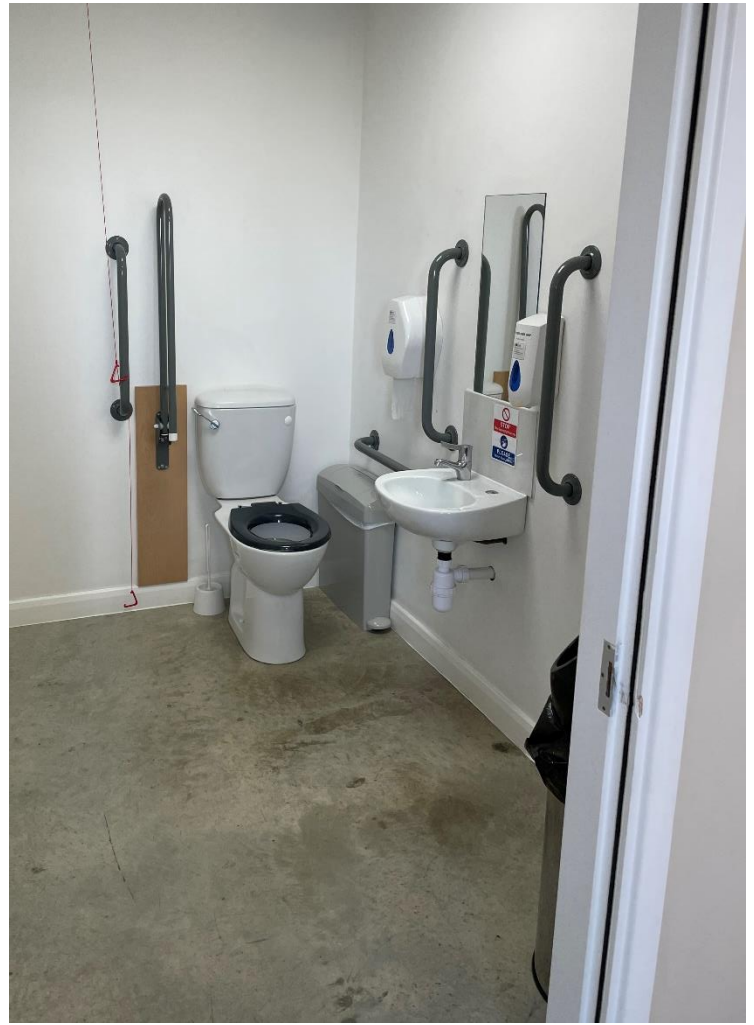
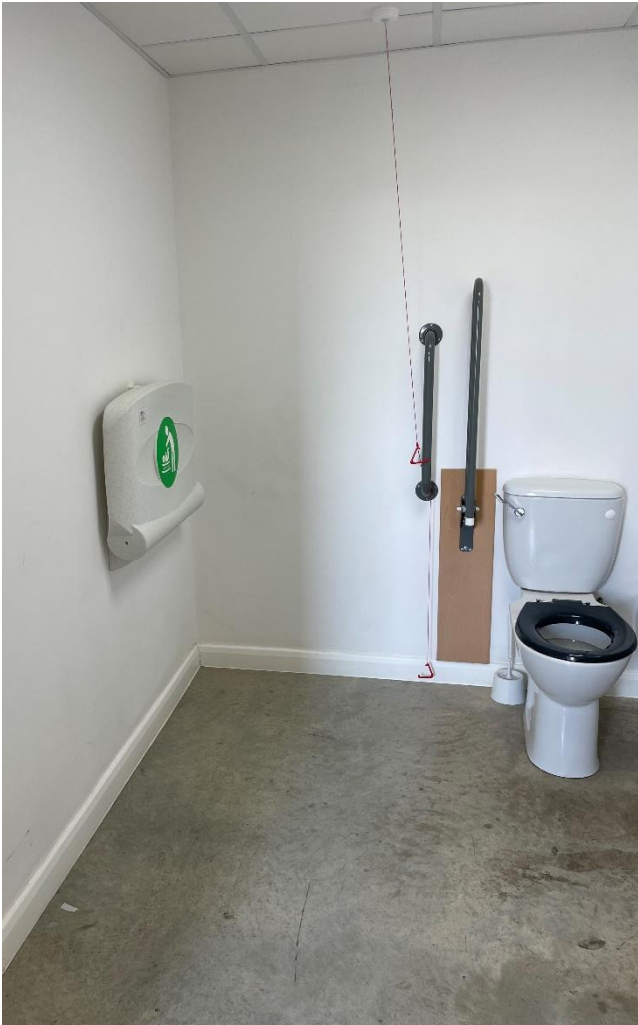
Historically during extended periods of poor weather and a highwater table the Driffield Showground has flooded, to alleviate the effects of flood water on the buildings and facilities a grass swale was added across the mainfield in 2021, please see page 3 for the route of the swale, this channel has sloping sides and is approximately 8m across and at the centre of the channel dips by approximately 300mm. two sections of tarmac road crosses this and is easily accessible.

Rix Pavilion & Rix Pavilion Toilet Block

This is our flagship venue and is fully DDA compliant throughout the facility. All entrances and exits have ramps and the main door has an electric opener / closer on it, all other doors are manual, with the majority wedged open for larger events.



The internal toilet block can also be reached through a fire exit door that has an access ramp up to it at the northern end of the Rix Pavilion.



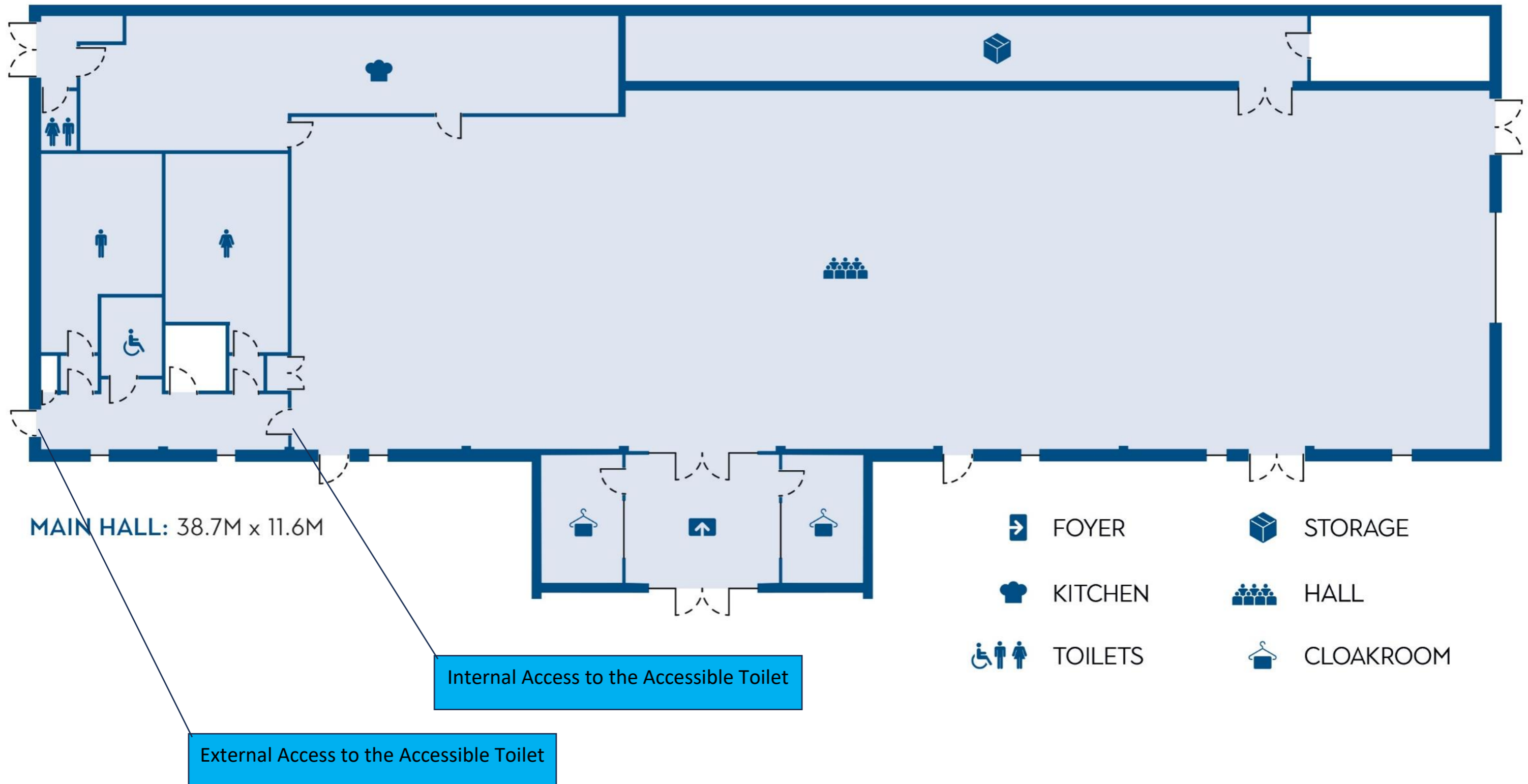
The toilets are accessed by a wide corridor accessible from both ends with wide accessible doors and has an alarm which sounds and flashes in the main hall.



All entrances and exits into the Rix Pavilion have long DDA compliant ramps making the facility accessible to all.

RIX PAVILION

The Rix Pavilion has been purposely designed, from the ground up, to be a flexible multipurpose event space which can be tailored to the needs of any event, whatever the occasion. Call or email to discover the possibilities for your event.

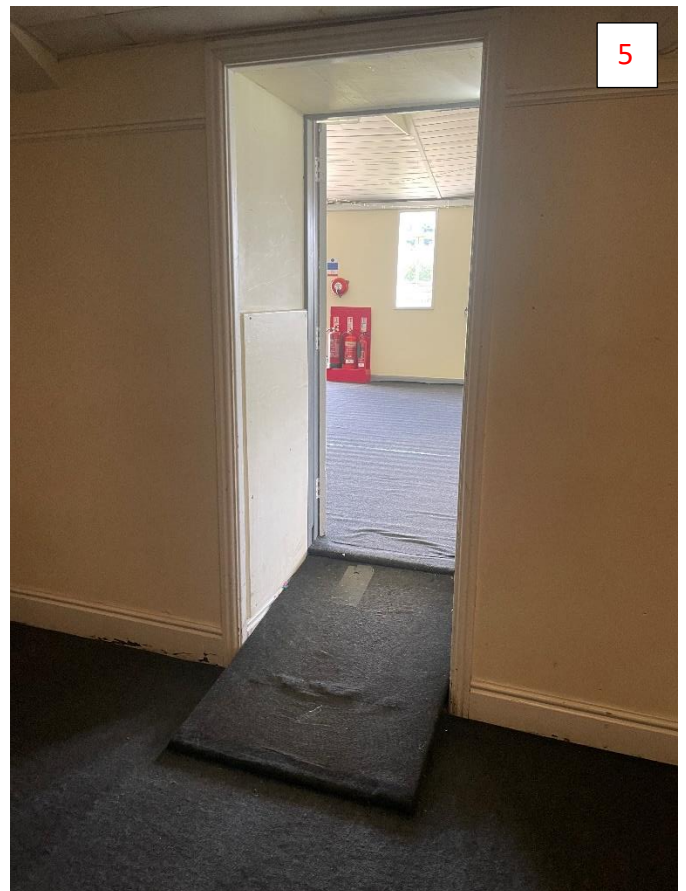


Members Pavilion

The Member's Pavilion is made up of several buildings spread over several floor heights so there are a series of ramps throughout the building. The main hall seen in image 1 is an ex officers mess dating back to approximately 1914 and came from Cattick aerodrome in 1964. Whilst not a listed building we try to be as sympathetic as possible with all works carried out on the facility.

You will see from the following images that wheel chairs can access all areas within the facility and the doors are in the process of being re painted so they can be distinguished from walls for those with visual impairment. The following images correspond to the plan of the building on page 12.







6

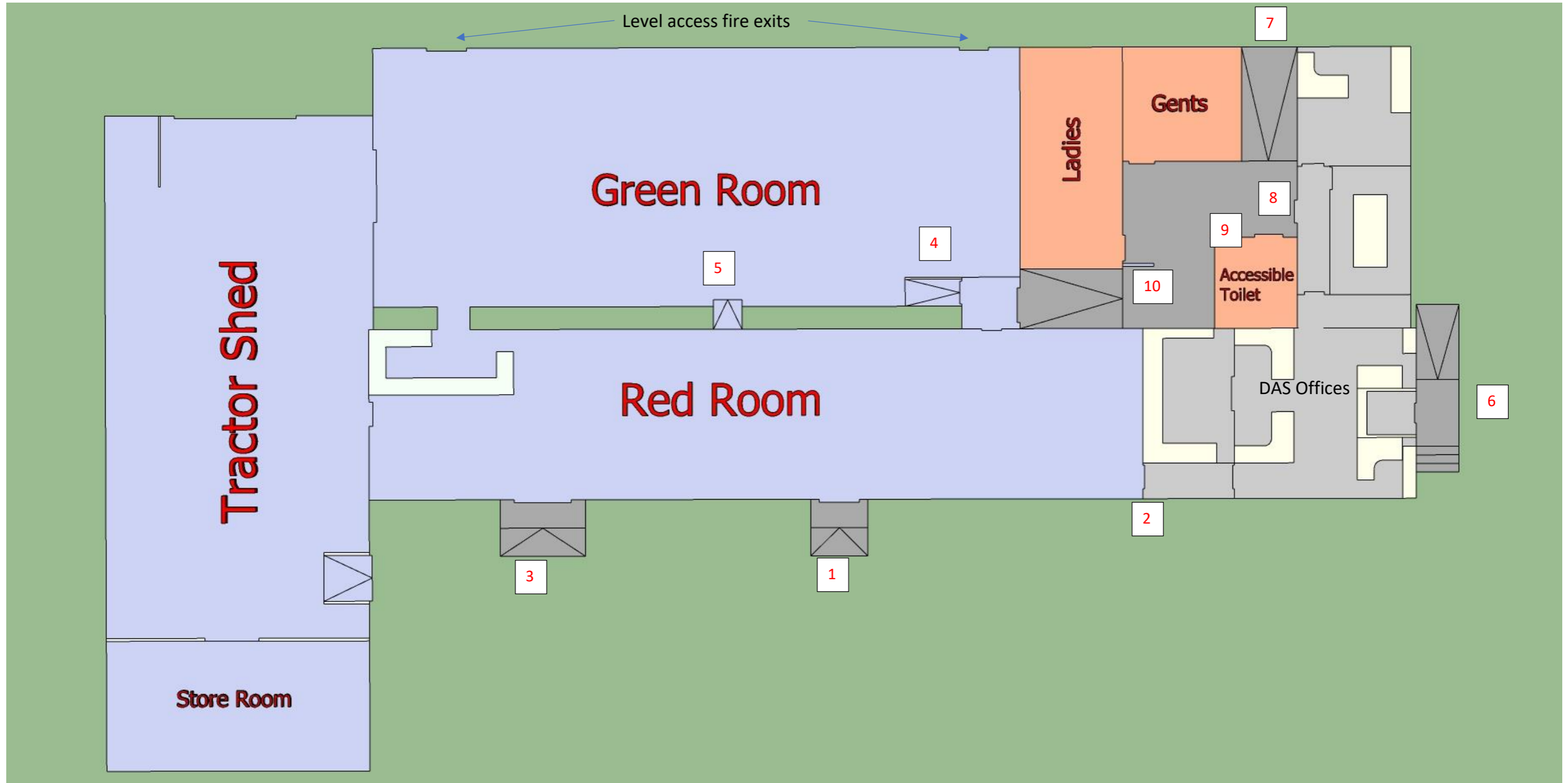


7



Members Pavilion

The preceding images give you a clear picture of all access points to the members Pavilion and also anything that we feel could help someone understand the facility before attending the site.



Market Weighton Toilet Block



This toilet block contains the accessible shower for the site and also has a changing bench in there to assist where possible, we acknowledge that without a winch this does come with limitations and as mentioned previously we hope to have a full changing places facility on site sometime in the near future when funding allows.





Cedar Lodge Toilet Block



This is our main satellite toilet block on site and has the standard DDA compliant toilet block within it, with a separate shower trailer adjacent to the unit. Due to the material this unit is made from we had to add the accessible shower to the market Weighton Shower block. Over the next month a further 2 facilities will be added to this block in the form of a family room and also a specific baby change room with adult facilities as well.

