



# DRIFFIELD SHOW

Wednesday 17<sup>th</sup> July 2024

## LIVESTOCK SCHEDULE



**Driffield**   
AGRICULTURAL SOCIETY

Driffield Showground, Driffield Road, Kelleythorpe, Driffield, East Yorkshire, YO25 9FB  
T: 01377 257494 E: [office@driffieldshowground.co.uk](mailto:office@driffieldshowground.co.uk)

[www.driffieldshowground.co.uk](http://www.driffieldshowground.co.uk)



## **148<sup>th</sup> DRIFFIELD SHOW**

**The Showground, Kelleythorpe, Driffield.**

**Cattle, Sheep & Pig entries to:**

Mr Simon Walgate, Driffield Showground, Kelleythorpe,  
Driffield, East Yorkshire. YO25 9FB

**Email: [office@driffieldshowground.co.uk](mailto:office@driffieldshowground.co.uk)**

**ENTRIES CLOSE: 17<sup>th</sup> JUNE, 2024**

### **SHOW AND LIVESTOCK CLASS SPONSORS 2024**

The Driffield Agricultural Society is indebted to and would like to thank all the companies, organisations and individuals who support and sponsor both the Driffield Show and the various individual Livestock Classes and whose continued support enables us to maintain the Show as the prestigious event it has become.

Class and Show Sponsorship packages are still available and further details may be obtained by contacting the Show Office on 01377 257494 or emailing [cheryl@driffieldshowground.co.uk](mailto:cheryl@driffieldshowground.co.uk)

In aid of

**Driffield**   
**AGRICULTURAL SOCIETY**  
Supporting Farming and the Countryside

**THE SECTION SECRETARIES FOR 148<sup>th</sup> DRIFFIELD SHOW**

<b>Livestock Section</b>	<b>Mr Simon Walgate</b>	<b>07926 877810</b>
<b>Equine Section</b>	<b>Miss Katie Norris</b>	<b>07919 941357</b>
<b>Horticultural Section</b>	<b>Mrs G Butler</b> Moor Edge House Brandesburton Driffield YO25 8LT	<b>01964 542959</b>
<b>Horticultural Trade Section</b>	<b>Mr M Temple</b>	<b>07971 963076</b>
<b>Handicraft Section</b>	<b>Mrs S Southcoat</b> 5 Coppergate Close Nafferton Driffield YO25 4LX	<b>07484 633518</b>

All other enquiries to the Showground Office on 01377 257494  
or email [office@driffieldshowground.co.uk](mailto:office@driffieldshowground.co.uk)

# SHEEP

## SPECIALS

### **P1 – THE EB BRADSHAW & SONS LTD PERPETUAL CHALLENGE TROPHY**

Awarded to the exhibitor gaining the most points in the Sheep Section.

Points will be awarded as follows: 1<sup>st</sup> – 3 points, 2<sup>nd</sup> – 2 points, 3<sup>rd</sup> – 1 point.

**Entry Fee:** £3.00

**Prize Money:** 1<sup>st</sup> - £15      2<sup>nd</sup> - £10      3<sup>rd</sup> - £7

**DRIFFIELD AGRICULTURAL SOCIETY** – will award champion and reserve rosettes in each section.

**Where a section has insufficient entries,  
the Society reserves the right to combine classes and/or sections.**

## **SHEEP RING TIMETABLES 2024**

All sheep must be in the Showground by 8.30am.

Judging to commence at 9.00am

The order of judging will be decided when all the entries have been received.

Would exhibitors who are showing more than one breed, please ensure that they bring sufficient handlers for all the sections as several sections will be judged simultaneously.

**PLEASE WOULD ALL COMPETITORS NOTE THE SHEEP  
INTER-BREED WILL TAKE PLACE AT 2.00PM**

### ***SPECIAL CONDITIONS SHEEP HEALTH SCHEME***

Please note that in 2024 the Sheep Breed Sections shall be as follows:-

- ❖ Beltex, Charollais, Hampshire, Lley, Suffolk, Texel and Any Other Continental sheep must have attained accredited status in accordance with the requirements of SAC Sheep Health Scheme.
- ❖ Greyface Dartmoor, Jacob, Ryeland, Primitive, Native and Any Other Rare Breed, Valais Blacknose and Non-Pedigree Sheep classes are non-accredited sheep only.
- ❖ Leicester Longwool and Oxford sheep classes are both accredited and non-accredited sheep.

*A valid fully completed SAC MV certificate of accreditation stating the number and type of sheep must accompany scheme sheep being presented at shows where there are separate sections for SAC scheme and non-scheme sheep.*

***THE CERTIFICATE OF MV/CAE STATUS FOR AN ACCREDITED ENTRY MUST BE PRESENTED TO THE SHEEP STEWARD BEFORE THE SHEEP ARE UNLOADED.***

Please note that no vehicles will be allowed to re-enter the showground until after the Grand Parade (4.00pm)

# SHEEP CLASSES

## BELTEX SHEEP

(MV Accredited)

Judge:

### CLASS

- 100 BELTEX Ram one shear and over
- 101 BELTEX RAM LAMB
- 102 BELTEX GIMMER SHEARLING
- 103 BELTEX GIMMER LAMB
- 104 BELTEX EWE that has suckled a lamb in current year

### SPECIALS

- S10 THE BELTEX TROPHY – awarded to the Champion Beltex Sheep in the Show  
THE BELTEX SHEEP SOCIETY ROSETTES – awarded to the Champion and Reserve Champion Sheep.  
All sheep to be Birth Notified or Fully Registered with the Beltex Sheep Society

## CHAROLLAIS SHEEP

(MV Accredited)

Judge: Mr S Hodgson, Carlisle

### CLASS

- 105 CHAROLLAIS RAM one shear and over
- 106 CHAROLLAIS RAM LAMB born on or after 1<sup>st</sup> December 2023
- 107 CHAROLLAIS EWE one shear and over
- 108 CHAROLLAIS EWE LAMB born on or after 1<sup>st</sup> December 2023

### SPECIALS

- S11 THE FARMWAY PERPETUAL CHALLENGE CUP – awarded to the Champion Charollais Sheep in the show.

## GREYFACE DARTMOOR SHEEP

(Non-Accredited)

Judge: Mrs S Champion, Highbridge

### CLASS

- 109 GREYFACE DARTMOOR RAM one shear and over
- 110 GREYFACE DARTMOOR RAM LAMB born in current year
- 111 GREYFACE DARTMOOR EWE one shear and over
- 112 GREYFACE DARTMOOR EWE LAMB born in current year

### SPECIALS

- S20 THE MARC BURGESS TROPHY - awarded to the champion Greyface Dartmoor in the Show  
The Dartmoor Sheep Breeders Association will award a rosette and £10 prize money to the best Greyface Dartmoor male and to the best Greyface Dartmoor female.

# HAMPSHIRE SHEEP

(MV Accredited)

**Judge: Mr M Adams, Wotton under Edge**

## CLASS

- 113 **HAMPSHIRE SHEARLING RAM** or upwards
- 114 **HAMPSHIRE RAM LAMB** born on or after 1<sup>st</sup> December 2023
- 115 **HAMPSHIRE SHEARLING EWE**
- 116 **HAMPSHIRE EWE LAMB** born on or after 1<sup>st</sup> December 2023

All shearlings and above to be shorn bare on or after 1<sup>st</sup> April

## SPECIALS

- S14 **THE ELLA BILLET MEMORIAL TROPHY** – Awarded to the Champion Hampshire Sheep in the Show.
- S15 **GEORGE BRIGGS MEMORIAL TROPHY** – Awarded to the best Shearling Ram Lamb in the Show.

# JACOB SHEEP

(Non-Accredited)

All sheep to be shown to Breed Society Rules

**Judge: Mr J Newborough, Lincoln**

## CLASS

- 117 **JACOB RAM**, Shearling or upwards
- 118 **JACOB RAM LAMB** born in current year
- 119 **JACOB SHEARLING EWE**
- 120 **JACOB EWE LAMB** born in current year
- 121 **JACOB EWE** that suckled a lamb in current year

## SPECIALS

- S18 **THE JACOB SHEEP SOCIETY ROSETTE** – awarded to the Champion Jacob
- THE W PETER MILNER MEMORIAL TROPHY** – awarded to the Champion Jacob.

## LEICESTER LONGWOOL SHEEP

(MV Accredited and Non Accredited)

Judge: Mr M Elliott, Knaresborough

### CLASS

- 122 AGED LEICESTER RAM
- 123 LEICESTER SHEARLING RAM
- 124 LEICESTER RAM LAMB born in current year
- 125 LEICESTER GIMMER SHEARLING
- 126 LEICESTER GIMMER LAMB born in current year
- 127 LEICESTER GIMMER full wool
- 128 LEICESTER EWE that has suckled a lamb in current year
- 129 GROUP OF THREE (2 females and 1 male)

All sheep to be shown to Breed Society Rules

### SPECIALS

- S1 THE W JORDAN SILVER CHALLENGE CUP – awarded to the best group of three Leicester Sheep in class 129 (2 females and 1 male).
- S2 THE ERNEST BODDY MEMORIAL ROSEBOWL – awarded to the Champion Leicester Sheep.
- S3 THE ALLIANCE AND LEICESTER BUILDING SOCIETY ROSEBOWL - awarded to the Champion Female Leicester Sheep.
- S4 THE WOOL CUP – awarded to the Leicester Sheep entered in Class 122 - 127 inclusive that has the best wool.

## LLEYN SHEEP

(MV Accredited)

Judge:

### CLASS

- |     |   |     |                     |
|-----|---|-----|---------------------|
| 130 | LLEYN ADULT RAM 2 shears or over                  | 134 | LLEYN SHEARLING EWE |
| 131 | LLEYN SHEARLING RAM                               | 135 | LLEYN EWE LAMB      |
| 132 | LLEYN RAM LAMB                                    |     |                     |
| 133 | LLEYN EWE that has suckled a lamb in current year |     |                     |

All animals to be shown untrimmed, light brushing only accepted, any washing to be confined to the head and legs only. All animals to be sheared bare after 1<sup>st</sup> May. All lambs shown must be tagged.

### SPECIALS

- S12 THE NORTH & EAST LLEYN BREEDERS TROPHY - awarded to the Champion Lley Sheep in the Show.

## **OXFORD SHEEP**

(MV Accredited and Non-accredited)

**Judge: Mr O T Jones, Llangefni**

### **CLASS**

- 136 OXFORD RAM**, Shearling or upwards
- 137 OXFORD RAM LAMB** born after 1<sup>st</sup> December 2023
- 138 OXFORD SHEARLING EWE** or ewe that has suckled lamb in current year
- 139 OXFORD EWE LAMB** born after the 1<sup>st</sup> December 2023

All shearlings and above to be shorn after 1<sup>st</sup> February.

### **SPECIALS**

- S13 THE CIBA-GEIGY CHALLENGE TROPHY** - Awarded to the best Oxford Sheep in the Show.

## **RYELAND SHEEP**

(Non-Accredited)

**Judge: Ms C Ellis, Barnsley**

### **CLASS**

- 140 RYELAND RAM** one shear and over
- 141 RYELAND RAM LAMB** born in current year
- 142 RYELAND EWE** one shear and over
- 143 RYELAND EWE LAMB** born in current year

### **SPECIALS**

- S19 THE RYELAND TROPHY** - awarded to the champion Ryeland in the Show

## **SUFFOLK SHEEP**

(MV Accredited)

**Judge: Mr P Sykes, Holmfirth**

### **CLASS**

- 144 SUFFOLK SHEARLING RAM**
- 145 SUFFOLK RAM LAMB**
- 146 SUFFOLK GIMMER EWE**
- 147 SUFFOLK EWE LAMB**
- 148 SUFFOLK EWE** that has suckled a lamb in current year

### **SPECIALS**

- S5 THE ALBRIGHT AND WILSON LTD SALVER** – awarded to the Champion Suffolk Sheep in the show.
- THE SUFFOLK SHEEP SOCIETY ROSETTE** – awarded to the Best Exhibit in the Suffolk Sheep Section entered by a registered flock owner. This will normally be the champion unless the owner is not registered.



## TEXEL SHEEP

(MV Accredited)

SPONSORED BY FRANK HILL & SON AUCTIONEERS & VALUERS LTD

Judge: Mr M Keighley, Leathley

### CLASS

149	TEXEL SHEARLING RAM	152	TEXEL GIMMER SHEARLING
150	TEXEL RAM, 2 shear and over	153	TEXEL GIMMER LAMB
151	TEXEL RAM LAMB	154	TEXEL EWE that suckled a lamb in current year

### SPECIALS

- S6 **A PERPETUAL CHALLENGE TROPHY** – presented by Mr G Chatterton awarded to the Champion Texel Sheep in the show.
- S7 **THE FIMBER ROSEBOWL** – awarded to the Best Shearling Ram
- S8 **THE BOB NEWBY TROPHY** – awarded to best Ram Lamb
- S9 **THE RUTH LUCAS TROPHY** - awarded to the best Texel Ewe Lamb
- THE TEXEL SHEEP SOCIETY ROSETTES** – awarded to the Champion and Reserve Champion Sheep.
- These classes qualify for The Northern Area Texel Sheep Breeders Show Points Trophy Competition

## VALAIS BLACKNOSE SHEEP

(Non-Accredited)

Judge:

### CLASS

155	VALAIS BLACKNOSE RAM one shear and over
156	VALAIS BLACKNOSE RAM LAMB born in current year
157	VALAIS BLACKNOSE EWE one shear and over
158	VALAIS BLACKNOSE EWE LAMB born in current year

### SPECIALS

- S21 - awarded to the champion Valais Blacknose Sheep in the Show

## ANY OTHER CONTINENTAL SHEEP

(MV Accredited)

Judge: Mr A Parks, Cranswick

### CLASS

159	ANY OTHER CONTINENTAL RAM one shear and over
160	ANY OTHER CONTINENTAL RAM LAMB
161	ANY OTHER CONTINENTAL GIMMER SHEARLING
162	ANY OTHER CONTINENTAL GIMMER LAMB
163	ANY OTHER CONTINENTAL EWE that has suckled a lamb in current year

- S16 **THE JOE OWEN PERPETUAL CHALLENGE TROPHY** – awarded to the Champion AOC

## **NATIVE & OTHER RARE BREED SHEEP**

(Non-Accredited)

Including Breeds on the RBST lists – Excluding Leicester Longwool

**No sheep to enter more than one section**

**Judge: Mrs T Wigham, Carlisle**

### **CLASS**

- 164 ANY OTHER RARE OR NATIVE BREED RAM SHEARLING or upwards**
- 165 ANY OTHER RARE OR NATIVE BREED RAM LAMB**
- 166 ANY OTHER RARE OR NATIVE BREED EWE**
- 167 ANY OTHER RARE OR NATIVE BREED GIMMER SHEARLING**
- 168 ANY OTHER RARE OR NATIVE BREED GIMMER LAMB**

### **SPECIALS**

- S23 THE TR BROUMPTON MEMORIAL TROPHY – awarded to the champion native or other rare breed sheep in the Show.**

## **PRIMITIVE BREED SHEEP**

(Non-Accredited)

**No sheep to enter more than one section**

**Judge: Mr E Medway, Harrogate**

### **CLASS**

- |  |                                       |
|--|---------------------------------------|
| <b>169 PRIMITIVE RAM SHEARLING and upwards</b> | <b>172 PRIMITIVE GIMMER SHEARLING</b> |
| <b>170 PRIMITIVE RAM LAMB</b>                  | <b>173 PRIMITIVE GIMMER LAMB</b>      |
| <b>171 PRIMITIVE EWE</b>                       |                                       |

- S22 THE DAVID BRAITHWAITE ROSE BOWL – awarded to the Champion Primitive Sheep in the show.**

## **INTER-BREED CHAMPIONSHIP**

### **CLASS**

- 174 ALL SHEEP SECTIONS CHAMPIONS** are eligible to compete for the Inter-Breed Championship.

This class will be judged on a points system, each judge giving points to the sheep as a type to its breed. The judges will not award points to the champion of their own breed. The winner being the sheep with the most points when added together.

### **SPECIALS**

- S17 THE RAYMOND TWIDDLE INTERBREED TROPHY – awarded to the Champion Sheep in the Show**

## **NON-PEDIGREE SHEEP**

(Non-Accredited Only)

**Judge: Mr P Bannister, Butterwick**

### **CLASS**

- 175** **PEN OF THREE LAMBS** sired by a continental ram most suitable for Butchers having a total live weight of less than 115kgs. **NO RAM LAMBS**
- 176** **PEN OF THREE LAMBS** sired by a continental ram most suitable for Butchers requirements, having a total live weight of 115kgs and over. **NO RAM LAMBS**
- 177** **PEN OF THREE SHEARLINGS GIMMERS**
- 178** **PEN OF THREE EWES** having suckled lambs in current year
- 179** **PEN OF THREE LAMBS** sired by native ram most suitable for butchers requirements having a total live weight of less than 115kgs. **NO RAM LAMBS**
- 180** **PEN OF THREE LAMBS** sired by a native ram most suitable for butchers requirements having a total live weight of 115kgs and over. **NO RAM LAMBS**  
The lambs to be untrimmed.

### **SPECIALS**

- S24** **THE KENNETH WILSON CHALLENGE CUP** – awarded to the Champion Pen of Lambs.

## **JUNIOR SHEEP HANDLER**

**Judge Class 181: Mrs J Oglesby, Morpeth**

**Judge Class 182: Mr R Oglesby, Morpeth**

No entry fee

- 181** **LAMB/SHEEP** should be shown by a child 11 years old and under on Show day
- 182** **LAMB/SHEEP** should be shown by a child aged 12- 16 years old and under on Show day

Class to be split by accreditation if sufficient entries

The Best Young Handler in each class will receive a trophy to keep, donated by the Drifffield Agricultural Society

# CARCASE CLASSES

SPONSORED BY JOHN PENNY & SONS

Judge: Mr J Penny, Leeds

## SPECIAL CONDITIONS

Livestock should be delivered directly to York Cattle Market on Monday 15<sup>th</sup> July between 7am and 9am from where they will be taken to John Penny & Sons Abattoir, Leeds.

Several butchers have agreed to purchase any lamb carcasses not required for home use on the day and Mr Parkin also offered to provide cutting up arrangements for those wishing to take their carcasses back.

The Driffield Agricultural Society hope to display as many carcasses as possible in the glazed chilled display unit situated in the livestock area.

We aim to make the competition an active promotion of quality local meats and to provide an understanding of what makes a quality carcasse.

Should a carcasse be unsaleable, the Exhibitor must pay the slaughtering charges. In the event of entries exceeding exhibiting facilities, the Society reserves the right not to exhibit non-prize winners.

**Entry fee:** £18.00 (£3 entry fee and £15 killing fee all to be paid on entry)

**Prize money:** Classes 190 – 193    1<sup>st</sup> - £25    2<sup>nd</sup> - £20    3<sup>rd</sup> - £15

### CLASS

- 190**            A continental lamb (No Ram Lambs) with a dead weight of under 22kgs.
- 191**            A continental lamb (No Ram Lambs) with a dead weight over 22.1kg.
- 192**            A native sire lamb (No Ram Lambs) with a dead weight under 22kg.
- 193**            A native sire lamb (No Ram Lambs) with a dead weight over 22.1kg

Entries for the **Lamb** classes are limited to two entries per class per exhibitor.

### SPECIALS

**CC2    THE CONNOR CHALLENGE CUP** – awarded to the Champion Lamb Carcasse.



# RICAN<sub>ATV</sub>

**HONDA**  
**AUTHORISED  
DEALER**

SALES  
SERVICE  
EXPERTISE






**VISIT US ON STAND P240**

**PROUD SPONSORS OF THE 1.40M OPEN CHAMPIONSHIP SHOW JUMPING**

- New & Used ATVs
- New & Used UTVs
- Implements
- ATV Parts
- ATV Tyres
- and more



[www.ricanatv.co.uk](http://www.ricanatv.co.uk)

01430 860616   

**LOGIC**

**WESSEX**  
BY SERVICE

# CATTLE CLASSES

Entry Fee: £5

Prize Money: 1<sup>st</sup> - £40      2<sup>nd</sup> - £20      3<sup>rd</sup> - £15      4<sup>TH</sup> - £10

**THE SOCIETY RESERVES THE RIGHT TO AMALGAMATE OR SPLIT CLASSES WHERE ENTRIES WARRANT IT. IN THE EVENT OF THERE BEING ONLY ONE ENTRY IN EITHER OR BOTH OF THE BULL OR HEIFER CLASSES THE CLASSES WILL BE AMALGAMATED.**

**PASSPORTS WILL BE CHECKED AND MUST ACCOMPANY THE ANIMAL.**

All cattle must be on the Showground by 8.30am.

Cattle to be judged in Four Rings commencing at 9.00am.

The order of judging will be advised with the exhibitor's tickets.

This will be decided when entries are known.

## ABERDEEN-ANGUS CATTLE

(Registered Cattle)

Judge: Mrs V McClaren, Stockton

### CLASS

- 200 ABERDEEN ANGUS BULL** born prior to 1<sup>st</sup> January 2023
- 201 ABERDEEN ANGUS BULL** born on or after 1<sup>st</sup> January 2023
- 202 ABERDEEN ANGUS COW** in milk or in calf, born before 1<sup>st</sup> January 2022
- 203 ABERDEEN ANGUS HEIFER** born on or after 1<sup>st</sup> January, 2021 and before 1<sup>st</sup> January, 2023
- 204 ABERDEEN ANGUS HEIFER** born on or after 1<sup>st</sup> January 2023

### SPECIALS

**C3 A CHALLENGE TROPHY-** presented by HJA Hopper Esq – awarded to the Champion Aberdeen Angus Animal.

**THE ABERDEEN ANGUS CATTLE SOCIETY** will present a tartan sash for the champion and a rosette for the Best Animal bred by the exhibitor.

Furthermore, in the event of 15 or more entries forward, the Aberdeen Angus Society will award commemorative medal from the Aberdeen Angus Cattle Society.

**THE DRIFFIELD AGRICULTURAL SOCIETY'S CHAMPIONSHIP ROSETTE AND SASH** – awarded to the best in the show.

**NORTH EAST ENGLAND ABERDEEN ANGUS CLUB GEORGE AND SONIA TEAL PERPETUAL ROSEBOWL** – PRIZE WINNERS in the Aberdeen Angus Classes at this show are eligible to compete for the above award. Points will be awarded and the owner of the animal with the highest combined total of points at the end of the season will receive a Rose Bowl.

The champion of this section will be eligible to compete for the Beef Inter-Breed Competition

# **BEEF SHORTHORN CATTLE**

**SPONSORED BY ALDGATE VETERINARY PRACTICE**

(Registered Cattle)

**Judge: Ms P Nicol, Blairgowrie**

## **CLASS**

- 205 BEEF SHORTHORN BULL** any age.
- 206 BEEF SHORTHORN COW OR HEIFER** in milk or in calf, born before 31<sup>st</sup> December 2021
- 207 BEEF SHORTHORN HEIFER** born in 2022
- 208 BEEF SHORTHORN HEIFER** born in 2023

## **SPECIALS**

- C7 THE STONEHILLS TROPHY** – awarded to the Champion Beef Shorthorn in the Show

The champion of this section will be eligible to compete for the Beef Inter-Breed Competition.

# **BRITISH BLONDE CATTLE**

(Registered Cattle)

**Judge: Mr S O Kane, Powys**

## **CLASS**

- 209 BRITISH BLONDE BULL** born on or before 31<sup>st</sup> December 2022
- 210 BRITISH BLONDE BULL** born on or after 1<sup>st</sup> January 2023
- 211 BRITISH BLONDE COW or HEIFER** born on or before 31<sup>st</sup> December, 2021 in milk or in calf
- 212 BRITISH BLONDE HEIFER** born on or after 1<sup>st</sup> January 2021 and 31<sup>st</sup> December 2022
- 213 BRITISH BLONDE HEIFER** born on or after 1<sup>st</sup> January 2023

## **SPECIALS**

- C6 THE WILLIAM SEELS SALVER** – awarded to the Champion British Blonde.  
**THE BRITISH BLONDE SOCIETY SASH** - awarded to the Champion Blonde in the Show.

The champion of this section will be eligible to compete for the Beef Inter-Breed Competition

# **BRITISH BLUE CATTLE**

(Registered Cattle)

**Judge: Mrs E Wilson, Richmond**

## **CLASS**

- 214 BRITISH BLUE MALE** over 18 months
- 215 BRITISH BLUE MALE** under 18 months
- 216 BRITISH BLUE FEMALE** over 30 months
- 217 BRITISH BLUE FEMALE** over 18 months and under 30 months
- 218 BRITISH BLUE FEMALE** under 18 months

## **SPECIALS**

- C5 A CHALLENGE CUP**, presented by Mr R Nicholson for the best in the show.  
**THE DRIFFIELD AGRICULTURAL SOCIETY'S CHAMPIONSHIP ROSETTE AND SASH** – awarded to the best in the show.

The champion of this section will be eligible to compete for the Beef Inter-Breed competition.

# CHAROLAIS CATTLE

(Registered Cattle)

Judge: Mr S O Kane, Powys

## CLASS

- 219 CHAROLAIS BULL born on or before 31<sup>st</sup> December, 2022
- 220 CHAROLAIS BULL born on or after 1<sup>st</sup> January 2023
- 221 CHAROLAIS HEIFER in calf with first calf or with first calf at foot, born after 1<sup>st</sup> January 2021
- 222 CHAROLAIS COW OR HEIFER In calf or in milk born before 31<sup>st</sup> December 2021
- 223 CHAROLAIS MAIDEN HEIFER born on or after 1<sup>st</sup> January 2023

## SPECIALS

- C1 THE KIRKGATE TROPHY, presented by Mrs E Chafer for the Champion Pure Bred Charolais in the show.
  - C2 THE YORKSHIRE CHAROLAIS BREEDERS CLUB SALVER for the Champion Charolais in the show.
- THE DRIFFIELD AGRICULTURAL SOCIETY'S CHAMPIONSHIP ROSETTE AND SASH – awarded to the best in the show.

The champion of this section will be eligible to compete for the Beef-Inter-Breed Competition.

# DEXTER CATTLE

(Registered Cattle)

SPONSORED BY HAVEN VET GROUP

Judge: Miss C Bickerton, Middlewich

## CLASS

- 224 DEXTER BULL any age.
- 225 DEXTER HEIFER over 18 months old
- 226 DEXTER HEIFER under 18 months old.
- 227 DEXTER DRY COW OR HEIFER in calf with 2<sup>nd</sup> calf
- 228 DEXTER COW OR HEIFER IN MILK.

## SPECIALS

- C19 THE NORTHERN DEXTER GROUP TROPHY – awarded to the Champion Dexter in the Show
  - C20 THE THISTLE CUP – awarded to the Best Dry Cow in the Dexter classes.
  - C21 THE HOLDERNESS CUP – awarded to the Best Homebred Heifer in the Dexter classes
- THE DRIFFIELD AGRICULTURAL SOCIETY'S CHAMPIONSHIP ROSETTE AND SASH – awarded to the best in the show.

The champion of this section will be eligible to compete for the Beef Inter-Breed Competition.



# LIMOUSIN CATTLE

(Registered cattle)

**SPONSORED BY RICAN ATV LTD**

**Judge: Mrs E Wilson, Richmond**

## CLASS

- 229 LIMOUSIN BULL** born before 1<sup>st</sup> March 2023
- 230 LIMOUSIN BULL** born on or after 1<sup>st</sup> March 2023
- 231 LIMOUSIN COW OR HEIFER** in calf or in milk born on or before 31<sup>st</sup> December 2021
- 232 LIMOUSIN HEIFER** born in 2022 in calf or at foot
- 233 LIMOUSIN HEIFER** born on or after 1<sup>st</sup> January 2023

## SPECIALS

- C4 THE SIR THOMAS FERENS PERPETUAL CHALLENGE CUP** – awarded to the Best Limousin Animal in the show.

**THE DRIFFIELD AGRICULTURAL SOCIETY'S CHAMPIONSHIP ROSETTE AND SASH** – awarded to the best in the show.

**THE BRITISH LIMOUSIN CATTLE SOCIETY** offers rosettes to the champion and Reserve Champion Limousin and rosettes to the 4<sup>th</sup> place.

The winners of classes 230 and 233, if bred by a member of the North East Limousin Breeders Club will qualify for entry for The Bull Challenge Trophy and for the Heifer Challenge Trophy.

The champion of this section will be eligible to compete for the Beef Inter-Breed Competition

# LINCOLN RED CATTLE

(Breed Society Registered)

**Judge: Mr S O Kane, Powys**

## CLASS

- 234 LINCOLN RED BULL** born on or before 31<sup>st</sup> December 2022
- 235 LINCOLN RED BULL** born on or after 1<sup>st</sup> January, 2023
- 236 LINCOLN RED COW OR HEIFER** in milk or in calf, born on or before 31<sup>st</sup> December, 2021
- 237 LINCOLN RED HEIFER** born in 2022
- 238 LINCOLN RED HEIFER** born in 2023

## SPECIALS

**THE LINCOLN RED CATTLE SOCIETY ROSETTE** – awarded to the Champion and Reserve Champion Lincoln Red

- C8 THE PERPETUAL PARKES CHALLENGE CUP** – awarded to the Lincoln Red Breed Champion presented by Manby Farms Ltd.

The champion of this section will be eligible to compete for the Beef Inter-Breed Competition.

## **ANY OTHER CONTINENTAL**

(Breed Society Registered)

**Judge: Mr A Fisher**

### **CLASS**

- 239 BULL** any age - Classes will be split further if sufficient entries.
- 240 COW OR HEIFER** in milk or in calf, born before 31<sup>st</sup> December 2021
- 241 HEIFER** born in 2022
- 242 HEIFER** born in 2023

### **SPECIALS**

- C9 THE NORTH EAST SIMMENTAL CLUB TROPHY** – for the champion Simmental in the show.

**THE DRIFFIELD AGRICULTURAL SOCIETY'S CHAMPIONSHIP ROSETTE AND SASH** – awarded to best in show.

The champion of this section will be eligible to compete for the Beef Inter-Breed Competition.

## **ANY OTHER NATIVE**

(Breed Society Registered)

**Judge: Mr A Fisher**

### **CLASS**

- 243 BULL** any age - Classes will be split further if sufficient entries.
- 244 COW OR HEIFER** in milk or in calf, born before 31<sup>st</sup> December 2021
- 245 HEIFER** born in 2022
- 246 HEIFER** born in 2023

- C10 THE JOY RICHARDSON TROPHY** – donated by Paul Richardson to the Champion AON Pedigree

**THE DRIFFIELD AGRICULTURAL SOCIETY'S CHAMPIONSHIP ROSETTE AND SASH** – awarded to best in show.

The champion of this section will be eligible to compete for the Beef Inter-Breed Competition.

# BEEF CATTLE INTER-BREED COMPETITION

Judge: Mr J Bloom, Scarborough

**Prize money:** Supreme Champion - £30 Reserve Supreme Champion - £20

**This section to be split into two competitions one for Continental and one for Native with overall supreme champion and reserve champion.**

Continental Inter-breed competition:- The champion from Charolais, British Blue, British Blonde, Limousin and Any Other Continental.

Native Inter-breed competition:-The champion from Aberdeen Angus, Beef Shorthorn, Dexter, Lincoln Red sections and Any Other Native are eligible to compete for this.

The judge will take into account both conformation of the animals and trueness of breed type when making his decision.

**THE DRIFFIELD AGRICULTURAL SOCIETY** will provide Native Champion and Reserve rosettes, Continental Champion and Reserve Champion rosettes and Supreme Champion and Reserve rosettes.

## SPECIALS

**C12 THE JCW BLOOM SILVER SALVER** – for the supreme champion Beef Cattle Interbreed.

**THE DRIFFIELD AGRICULTURAL SOCIETY** will provide Champion and Reserve Champion rosettes to each of the cattle sections. A sash will be awarded to each Champion.

## COMMERCIAL BEEF CATTLE

(No pure breeds)

Judge: Mr D Binks, Wakefield

### CLASS

- 247 STEER SIRED BY BRITISH BLUE** class to be divided by weight if more than 10 entries forward
- 248 HEIFER SIRED BY BRITISH BLUE** class to be divided by weight if more than 10 entries forward
- 249 STEER SIRED BY LIMOUSIN** class to be divided by weight if more than 10 entries forward
- 250 HEIFER SIRED BY ANY LIMOUSIN** class to be divided by weight if more than 10 entries forward
- 251 STEER, SIRED BY ANY ANY OTHER BREED BULL EXCEPT BRITISH BLUE AND LIMOUSIN**  
Class to be divided by weight if more than 10 entries forward
- 252 HEIFER SIRED BY ANY OTHER BREED BULL EXCEPT BRITISH BLUE AND LIMOUSIN.** Class to be divided by weight if more than 10 entries forward
- 253 PAIR OF BEEF CATTLE** any breed or sex, entered or eligible for entry in classes 243 – 248.  
Property of one owner

### SPECIALS

- P2 THE JOHNSTON ROSEBOWL** – awarded to the exhibitor gaining the most points in the Commercial Beef Cattle Classes 243 - 249. Points, awarded: 1<sup>st</sup> Prize – 3 points, 2<sup>nd</sup> Prize – 2 points, 3<sup>rd</sup> Prize – 1 point.
- C17 THE CLIFFORD WATTS GRAVEL QUARRIES PERPETUAL SILVER ROSEBOWL** – awarded to the Champion Beef Beast in the show.
- C18 THE YORKSHIRE BUILDING SOCIETY'S ROSEBOWL** – awarded to champion pair of beasts in class 249.
- THE DRIFFIELD AGRICULTURAL SOCIETY'S CHAMPIONSHIP ROSETTE AND SASH** – awarded to the champion beef beast in the show.
- £50** will be awarded to the Champion Commercial beast in the Show, kindly sponsored by Rosebud Flowers

# JUNIOR BEEF CATTLE HANDLER

Judge: Mr A Brown, Foggathorpe

No entry fee

**254** Any Beast halter trained, shown by a person under 16 on the day of the Show. All animals shown at stewards discretion.

Class to be split by age if sufficient entries

## SPECIALS

**C11 THE NICHOLSON TROPHY**- awarded to the best Young Handler

**THE BRITISH SIMMENTAL SOCIETY** will present a rosette to the Best Junior Handler in the Section.

The Best Young Handler will receive a trophy to keep donated by the Driffield Agricultural Society

*THE SHOWING OF AN ANIMAL BY A JUNIOR WILL BE AT THE CHIEF STEWARDS DISCRETION*

# DAIRY CLASSES

## HOLSTEIN CATTLE

**INCORPORATING BRITISH FRIESIAN BREEDERS**

(Fully Accredited)

Entries are restricted to animals in Herd Book or Class B or C of the supplementary register.

Milking Facilities will be available.

Judge: Mr M Shepherd, Bakewell

### CLASS

- |            |   |
|------------|---|
| <b>255</b> | <b>HOLSTEIN HEIFER</b> in calf with first calf                          |
| <b>256</b> | <b>HOLSTEIN COW IN CALF</b> with second or later calf                   |
| <b>257</b> | <b>HOLSTEIN HEIFER IN MILK</b>  |
| <b>258</b> | <b>HOLSTEIN COW IN MILK</b> having calved twice                         |
| <b>259</b> | <b>HOLSEIN COW IN MILK</b> having calved three times or more            |
| <b>260</b> | <b>BEST GROUP OF THREE HOLSTEIN FEMALES</b> owned by the same exhibitor |

## SPECIALS

**C13 THE DAVID BACKHOUSE PERPETUAL CHALLENGE CUP** – for the champion Holstein in the show.

**C14 THE SOUTHWELL PERPETUAL CHALLENGE CUP**, presented by Messrs Southwell Bros for the best group of three females

**THE DRIFFIELD AGRICULTURAL SOCIETY'S CHAMPIONSHIP ROSETTE AND SASH** –award to the best in the show.

**Holstein UK** offers a champion award rosette to the exhibitor of the Female champion.

**Holstein UK** offers a champion Exhibitor Bred Rosette to the exhibitor of the Female Exhibitor Bred Champion.

**Holstein UK** offers a Best Udder Rosette to the exhibitor of the Holstein with the Best Udder in the show.

**Holstein UK** offers a rosette to the Junior Champion in his section.

The definition of Exhibitor Bred – An animal is defined as “Exhibitor Bred” if it is born in the UK and carries the owner’s prefix. This includes animals born as a result of embryo transplant.

## **JERSEY CATTLE**

**Judge: Mr M Shepherd, Bakewell**

### **CLASS**

- 261 JERSEY HEIFER IN CALF** with first calf
- 262 JERSEY COW IN CALF** with second or later calf
- 263 JERSEY HEIFER IN MILK**
- 264 JERSEY COW IN MILK** having calved twice
- 265 JERSEY COW IN MILK** having calved three times or more
- 266 BEST GROUP OF THREE JERSEY FEMALES.** Owned by the same exhibitor

### **SPECIALS**

**THE JERSEY CATTLE SOCIETY** – offers a special rosette and prize card for the Best Jersey or Heifer, registered in the Herd Book, bred by the exhibitor who is a member of the Jersey Cattle Society.

- C15 THE JAMES HEATH MEMORIAL TROPHY** – awarded to the Best Jersey in the show.
- THE DRIFFIELD AGRICULTURAL SOCIETY'S CHAMPIONSHIP ROSETTE AND SASH** - awarded to the best in the show.

## **ALL DAIRY BREED CALF CLASSES**

**Judge: Mr M Shepherd, Bakewell**

### **CLASS**

- 267 MAIDEN HEIFER** born in 2023
- 268 MAIDEN HEIFER** born in 2024
- 269 CHAMPION DAIRY STOCK YOUNG HANDLER** calf to be shown by a child aged 16 years or under on the day of the Show. Class to be split by age if sufficient entries.

### **SPECIALS**

- C16 THE TOM SOUTHWELL MEMORIAL TROPHY** – awarded to the best Young Handler in class 269

## **DAIRY CATTLE INTER-BREED**

**Judge: Mr M Shepherd, Bakewell**

**Prize money:** Supreme Champion -£30    Reserve Supreme Champion -£20

Judging will take place after the completion of both dairy sections.

The champion from Holstein and Jersey sections are eligible to compete for this.

The judge will take into account both conformation of the animals and trueness of breed type when making their decision.

# PIG CLASSES

Judge: Mr N Hargrave, Kirby Misperton

Entry fee: £3.00

Prize money: 1<sup>st</sup> - £25      2<sup>nd</sup> - £18      3<sup>rd</sup> - £12

With sufficient entries classes may be split.

## CLASS

- 300**      **WHITE SOW OF ANY PURE BREED** can include white gilts in pig, born before 01.07.23
- 301**      **WHITE GILTS OF ANY PURE BREED** born after 01.07.23
- 302**      **COLOURED SOW OF ANY PURE BREED** can include coloured gilts in pig born before 01.07.23
- 303**      **COLOURED GILT OF ANY PURE BREED** born after 01.07.23
- 304**      **GILT OF ANY PURE BREED** born after 01.01.24
- 305**      **WHITE BOAR OF ANY PURE BREED** born after 01.01.24
- 306**      **COLOURED BOAR OF ANY PURE BREED** born after 01.1.24
- 307**      **MATCHING PAIR OF EITHER SEX**
- 308**      **ANY PIG SHOWN BY A YOUNG PERSON UNDER 16** on the day of the Show and judged as a young handler class (free on entry) .

Because of limited pen space, entries will be taken on a first come first served basis.

**Pigs to be on the Showground by 8.30am.** Judging to commence at 9.30am.

Holding No for Driffield Showground is 51/105/8003

## SPECIALS

**PG1**      **Driffield Agricultural Society Trophy** awarded to the champion pig in Show

**THE DRIFFIELD AGRICULTURAL SOCIETY'S CHAMPIONSHIP ROSETTE AND SASH** awarded to the champion pig

## YFC STOCK JUDGING

East Riding of Yorkshire Federation of Young Farmers' Clubs will be hosting stock judging classes at The Driffield Show. Please contact County Office on 01377 256637 for more information.

On behalf of The Driffield Agricultural Society, THE MARK BEAL MEMORIAL TROPHY will be presented to the competitor gaining the highest points.

## SHOW REGULATIONS

### GENERAL

1. Neither the Society nor any of its Officers or Servants shall in any way be responsible or accountable for anything that may happen (from any cause or circumstance whatsoever) to visitors, exhibitors, Servants or anyone attending the show, or to any exhibit or any other property brought into the showground, or for anything else in connection with or arising out of, or attributable to the Society's Show.
2. Each exhibitor shall be solely responsible for any consequential or other loss, injury or damage done to or occasioned by, or arising from any animal or article exhibited by him, and for its description as given in the catalogue, and shall indemnify the Secretary and Society Officers and Servants against all legal or other proceedings in regard thereto.
3. The Society reserves the absolute right to refuse or reject, unconditionally, any entry.
4. Any person making false entry, or who has given a false certificate, shall forfeit any unpaid prize money and shall be disqualified from exhibiting at the Society's show.
5. All stock must be bona-fide property of the exhibitor at the time of entry.
6. It's a condition of entry, that all stock exhibited is sufficiently trained and under control of a competent handler. Bulls must have two handlers. All exhibitors, whilst in the show rings should wear a white coat, or as prescribed by the Breed Society.
7. Exhibitors in the Cattle and Grand Parade are requested to note that, for safety reasons, children of and under the age of 16 years, will not be allowed to lead animals or accompany exhibitors into the cattle or main rings whilst the parades are taking place unless accompanied by an adult.
8. All distance for radius classes shall be measured on the Ordnance Survey Map.
9. In no case will the Society or its committee be responsible for any loss from accident or mistake or damage to any exhibits or packages, though every care will be taken for their safety.
10. The ages of exhibits will be calculated to the date fixed for the closing of entries unless stated otherwise.
11. If required, Certificates of the ages of animals entered must be delivered to the Secretary. The attention is drawn to the provision of the state health schemes in relation to MV and CAE and their responsibility to observe such rules and regulations. For its part, the Society will provide separate accommodation and guidelines to ensure that necessary controls are taken to preserve accredited status of the animals shown at the show.
12. A condition of entry is that you MUST comply with all current Animal Health and Welfare legislation regarding identification disease control and movements.

### TO ENTER

All entries to be made in writing to the Secretary and each exhibitor shall sign such certificates as shall be required by the Secretary at the time of entry. All livestock and Carcase entries **CLOSE ON 17<sup>TH</sup> JUNE, 2024** but the committee nevertheless reserve the right to accept entries up to such a time as they think fit. **NO ENTRY WILL BE ACCEPTED FOR JUDGING UNLESS IT APPEARS IN THE CATALOGUE.**

13. All entry fees to be paid at the time of entry and no entry will be accepted without payment of the prescribed fees.

### JUDGING

14. In all sections, the Judge's decision is final.
15. In all sections, no person other than the appointed Judges, Stewards and Committee Members shall be in any marquee or place of judging at the time of judging.
16. In any of the classes for livestock, where 7 entries are actually exhibited a fourth prize may be given.
17. The Committee reserves the right to split any livestock class, should the number of entries warrant it.
18. Where there are not more than 2 exhibitors in any class, such class may be cancelled, and where there are not more than 4 entries in and class the prize money can be reduced by one third.
19. The Judges will be empowered to withhold prize money when they are of the opinion that there is not sufficient merit in the stock exhibited to justify an award.
20. The Society reserves the right to withhold payment of prize money to any prize-winning exhibitor in the cattle, horses, ponies and heavy horses not parading in the Grand Parade.

### REMOVAL OF EXHIBITS

21. There will be a Grand Parade in the main ring of all prize winners of the horse and cattle sections. Any animals that are judged may leave the Showground at 4.00pm except the prize winners, which will parade in the grand parade.

### OBJECTIONS

22. In the Livestock section, objections to be laid with the Secretary within half an hour of the class being judged, with a deposit of £20. Deposits will be returned if the objection is upheld.
23. If any dispute shall arise, or any objection made by an exhibitor or any other person, such dispute or objection shall be settled by the Committee, who may decide upon such evidence as may appear satisfactory to them, and their decision in all matters shall be final and conclusive and not subject to appeal. The Society also reserves the right to itself, by its Committee, and in addition to any other provision contained in these rules, the right to refuse or cancel entries or classes, and prohibit exhibition of entries, as the Committee may deem expedient.

### CLAIMS

24. All claims for exhibits and selling classes etc must be made to the Secretary before 3.30pm on the day of the show. A commission of 10% will be charged on all sales. If any exhibit is claimed by two or more persons it will be sold by auction on the Showground at 3.45pm. Any amount realised beyond the catalogue price will be divided between the exhibitor and the Society except in selling classes, in which case the whole of the surplus shall go to the Society.
25. If any persons who have entered stock or other items and failed to exhibit the same shall forfeit all fee and charges paid on making their entries.

# ASIAN HORNET

This is an invasive species  
a threat to our wildlife

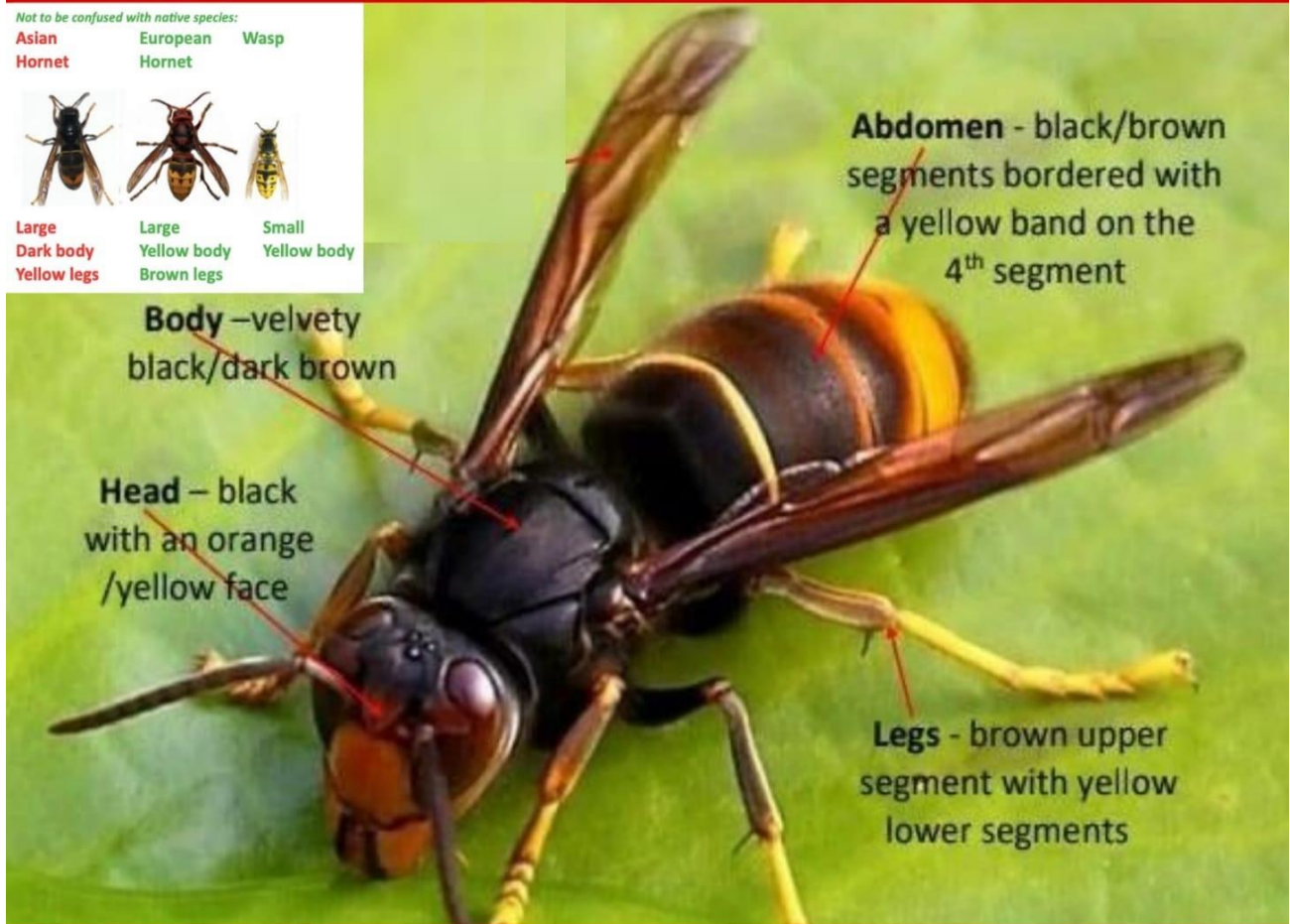
**REPORT ANY SUSPECTED SIGHTING**

Not to be confused with native species:

Asian European Wasp  
Hornet Hornet



Large Dark body Yellow legs  
Large Yellow body Brown legs  
Small Yellow body



Body –velvety  
black/dark brown

Head – black  
with an orange  
/yellow face

Abdomen - black/brown  
segments bordered with  
a yellow band on the  
4<sup>th</sup> segment

Legs - brown upper  
segment with yellow  
lower segments

For further info & to report sightings  
Search your App store or use the QR code for  
[bit.ly/asianhornetreport](https://bit.ly/asianhornetreport)



**ASIAN HORNET  
WATCH**



[www.lbka.org.uk](http://www.lbka.org.uk)

**THANK YOU!**

Designed by @mieldecie





**GSC GRAYS**

FARMERS • BUSINESS • LAND

## WANT TO KNOW IF SFI IS RIGHT FOR YOUR FARM?

Get FREE SFI advice from qualified and experienced farm business consultants through our Farm Business Advice Service (FBAS).

For more information or to book your on-farm visit, contact:



03333 059 059 | [fbas@gscgrays.co.uk](mailto:fbas@gscgrays.co.uk)

[GSCGRAYS.CO.UK/FBAS](https://www.gscgrays.co.uk/FBAS)

The GSC Grays Farm Business Advice Service is funded by DEFRA's Future Farming Resilience Fund.

